

# CHOBHAM LIFE

DECEMBER 2019

BROUGHT TO YOU BY CHOBHAM MANOR LLP



CHOBHAM  
MANOR  
E20

## CROP APPLE DAY



The apple juice flowed on Sunday 20 October 2019 at the first Apple Day event organised by the Chobham Residents Orchard Project (CROP), part of the Residents Association with support from Chobham Manor LLP.

With fruit from Brogdale Orchards in Kent, home of the National Fruit Collection, volunteers including many local children were able to produce litres of fresh juice using a special 'hydropress' set up in the Rain Garden.

As well as apple bobbing and an apple themed quiz, residents got involved in artistic activities including printing and drawing at The Hall community centre. Participants also sampled the 10 different apple varieties on show; among them Ashmeads Kernal, Ribston Pippin and Orleans Reinette.

National Apple Day was first organised in 1990 by the arts/conservation group Common Ground to celebrate traditional orchards and the hundreds of varieties of apple that grow in them. In future years, we hope to harvest fruit from the apple and pear trees planted in the Rain Garden. A wassail and winter pruning event are being planned for January and should encourage a good crop! Watch this space.

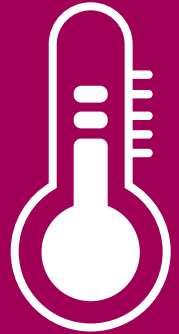
Contact Neil Sinden or Cath Arnold at [events@cme20.com](mailto:events@cme20.com) to find out more about CROP.

## TURN THE HEAT UP!

Chobham Manor Winter party is on Sunday 1 December, I look forward to seeing many of you there.

If you're planning to stick out the cold weather, then turn the heat up with a cuppa and read on about information and activities in your area. Bliss, our resident editor has some great ideas on going 'green' this Christmas. Soon I'll be reaching for my sunglasses to escape the cold on my winter sun holiday. I wish you all happy holidays over Christmas and New Year.

Sharan Ansong, Business Lead - Chobham Manor



## CHOBHAM MANOR WINTER PARTY



Sunday 1 December 2019

1pm - 4pm

At Timber Lodge, 1a Honour Lea Avenue, Stratford E20 1DY

### A WINTER PARTY TO JINGLE YOUR BELLS AND SLEIGH YOUR DAY!

Chobham Manor LLP and Chobham Manor Residents Association (CMRA) are jointly hosting a Winter Party for all Chobham Manor residents.

- Winter themed canapes and drinks, a cash bar will be available
- Sing East Community Choir will be singing melodies on arrival at 1pm
- Ornament decorating workshop
- Special dance performance from Leaders Community and more

For more information contact Sharan Ansong at [SAnsong@lqgroup.org.uk](mailto:SAnsong@lqgroup.org.uk) or CMRA events sub-committee at [Events@cme20.com](mailto:Events@cme20.com).

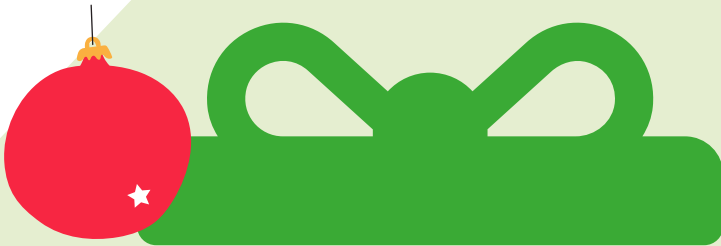


## ECO-FRIENDLY GIFTS AND IDEAS FOR A GREEN FESTIVE SEASON

It's that time of year again that we're thinking of gift ideas for loved ones. If you're like me and would like to give gifts that are eco-friendly, here are some ideas for memorable experiences or useful items that won't clutter up the house:



Bliss Holmes



### Workshops

- Baking workshops – try out Signorelli Bread Ahead or Konditor & Cook
- Cooking workshops – try your hand at cook's knife skills, fish preparation at Billingsgate Fish Market or Pizza Express pizza making parties
- Indulgent workshops such as delicious chocolate making or beer brewing.
- Creative workshops – get arty with calligraphy, flower arranging or soap-making

### Sport

- Velodrome BMX, road cycling, mountain biking or track taster session
- Lea Valley Riding Centre session
- Better gym or pool membership

### Kids Gifts

- WWF adopt an animal and receive a fact pack and regular updates in the post.
- RSPB gift membership for adults, families or children – children are sent a quarterly wildlife magazine in the post.
- Pre-loved toys such as Lego, train sets, Schleich animal figures (or other plastic toys which can be cleaned easily and will look brand new) second-hand jigsaw puzzles, board games, books etc.



### Cultural

- Afternoon Tea at venues such as Fortnum & Mason, Ritz and Browns
- Museum Membership perhaps visit the British Museum or V&A
- National Trust or English Heritage memberships – these could make great day trips throughout the year
- Theatre tickets or even backstage tours at Royal Albert Hall, London Stadium or Royal Opera House
- A trip up the ArcelorMittal Orbit (and maybe even a ride on The Slide!)



### Eco-gifts

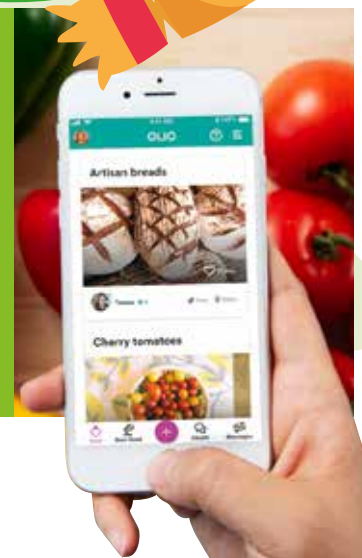
- Compostable phone case made of plant-based materials e.g. from Pela
- A stainless steel water bottle e.g. KleanKanteen
- A stainless steel gravity water filter e.g. Berkey, it's plastic free and the water tastes great
- A SodaStream with glass bottles for carbonated water or drinks

### Festive Cards, wrapping paper and Christmas crackers

- When buying cards or wrapping paper, consider options that do not contain any glitter, plastic coating or foil as these cannot be recycled. Look out for cards made of FSC or recycled paper that are much better for the environment.
- If you love Christmas crackers but don't like the little plastic gifts inside, you can find some plastic-free alternatives. The RSPB sell crackers with chocolate or origami, check out [Lovetiki.com](http://Lovetiki.com) or [nancyandbetty.com](http://nancyandbetty.com) for ideas.

### Food leftovers or unwanted gifts

Consider giving away leftover food or unwanted gifts on Olio – the food and non-food sharing app. Simply download the app and post your goods. There are plenty of Olio users in our neighbourhood so it may be easier that you think to give away your items quickly without having to throw them away.





# CELEBRATING SUCCESS AT E20 FOOTBALL FOUNDATION



In October 2019, we celebrated the annual E20 Football Foundation awards recognising the great achievements of many Chobham Manor residents; Hamza, Vivaan, Adam, Orla and Sammy.

This was followed by ProDirect visiting and rewarding some players with football boots. Our community members have also been recognised by Jack Petchey Foundation and 2 residents have won an award for their commitment within our academy.

We also hosted a special Halloween event at E20 on Sunday 3 November, that everyone really enjoyed.

Keep up to date at [www.e20-ff.co.uk](http://www.e20-ff.co.uk) our regular sessions are also listed on the events calendar on [www.chobhamlife.co.uk](http://www.chobhamlife.co.uk).

Jonathan Silman, Director

## SECOND HAND SALE

On Saturday 21 September, some Chobham Manor residents, together with the support of Chobham Manor LLP, hosted a second-hand sale of children's toys, books and clothes at Timber Lodge. Everybody was out and about on a warm and sunny day, which helped towards a very successful event with thirteen sellers (from Chobham Manor and East Village) and a great turn-out of buyers.

Lisa Bari, who runs the East Village playgroup, volunteered to sell items from the donation tables. £95 was raised (including a generous donation from a resident) and gifted to The Magpie Project – a charity providing practical support to mothers and children under five affected by homelessness in Newham. All unsold donated clothes were also sent on to the Magpie Project, who were very grateful for all the generous donations.

This was a highly worthwhile community event, another second hand sale will be planned for next year.



## PASSING THE FLAME



London Stadium Learning (LSL) launched its Heritage Lottery Funded 'Passing the Flame' Olympic and Paralympic project over October half term. Several children from Chobham Manor and East Village made the most of this amazing week of activities. Including a visit to the British Olympic Association Archives at UEL Docklands to see a sample of Olympic artefacts from the past 100 years.

At BT Sport TV studios young people had the chance to interview several inspirational people such as; Phillip Barker (freelance sports journalist and Olympic historian), five-time Karate world champion legend Geoff Thompson MBE, Tamika Carter (LSL Learning Mentor/Ex-Athlete), Brogan McIntosh (Newham & Essex Beagles) and some young local talent.

Participants and their families had the opportunity to attend a cycling competition at the Velodrome thanks to the Phynova Six Day London. Young people learned how to collect oral histories and created an exhibition of their families 2012 memorabilia and sharing their stories. The week finished with a celebration event for the participating families.

London Stadium Learning would love to gather your 2012 memorabilia and stories from the Games to share with others.

Please get in touch with [Anna.Chapman@newham.gov.uk](mailto:Anna.Chapman@newham.gov.uk) if you have family members that are British athletes or professionals that work with them. A website sharing the collated stories, films and images produced as free learning resources for children and young people will be available by the end of the year.



## MOSSBOURNE RIVERSIDE ACADEMY

'We believe anything is possible with the right attitude. We believe in the freedom to learn creatively in a calm, safe environment and we believe every child can succeed.'

Part of the Mossbourne Federation, Mossbourne Riverside Academy is founded on the same principles of educational excellence as its partner academies in Hackney.

Mossbourne Riverside Academy is a friendly, caring, primary academy; rated outstanding by OFSTED and have a strong focus on good behaviour. It's an exciting place to be and an exceptional learning experience for everyone.

Open evenings are now running for reception places in 2020, please visit [www.mra.mossbourne.org](http://www.mra.mossbourne.org) for more information.

## CONSTRUCTION UPDATE

The profile is clearly changing at Chobham Manor, here's how the construction is progressing...

### Phase 2

Construction on Phase 2 is now complete. Chobham Manor LLP send a warm welcome to all new residents that have recently moved in. We hope you enjoy your first Christmas in your new home.

### Phase 3

Across the Phase 3 blocks, works continues to progress quickly and on programme. As you may have seen in recent weeks, the blocks along Honour Lea Avenue (Phases 3A and 3E) now have their frames complete with windows being fitted across all blocks. There are also internal works underway to the apartments. Part of Phase 3D (which you may see from Temple Mills Lane) is up to roof level and is expected to complete Summer 2020. Blocks and beams are being laid across the traditional build properties on Phases 3D and 3C.

The construction site office has now moved to the corner of Abercrombie Road making way for the initial stages of preparing groundworks on Phase 3B; with piling due to commence in December 2019.

### Phase 4

The Sales and Marketing suite which was situated on Phase 4 has now been demolished and the sales team have relocated to their new office at Hyett Court. The final clearing process is taking place and piling is expected to start in December.

### Weekend working

Work taking place on Saturday will be within the agreed core working hours of 8am – 1pm.



## CHOBHAM MANOR AWARDS

Sean Quinn, Taylor Wimpey East London Project Director at Chobham Manor, is celebrating after winning a prestigious national house-building award. Out of thousands of entries, Sean's work at Chobham Manor was recognised with a National House-Building Council (NHBC) Pride in the Job Quality Award earlier this year.

The awards recognise an individual's dedication to building high-quality homes and are presented following a rigorous judging process by NHBC inspectors. This includes assessing the developments throughout the year, giving homebuyers the assurance that the site team provides top-quality homes and excellent customer service.

Taylor Wimpey East London also received a 'highly commended' award for its work on Chobham Manor, in the 'four storey house' category of this year's Housebuilder Awards.



## PHASE THREE LAUNCH

We're delighted to announce that phase three of Chobham Manor launched on 9th November, bringing a collection of three, four and five-bedroom homes to the development.

The new release has been well received by customers looking to join our growing community and settle at the Olympic Park.

The sales team are available every day at their new sales office, 1 Hyett Terrace, Honour Lea Avenue, London E20 1HH, from 10am until 5.30pm to chat about life at Chobham Manor and just how easy it can be to make your next move.

Michael O'Leary, Sales and Marketing Director for Taylor Wimpey East London, said: "Chobham Manor is a wonderful community to be a part of, with some of London's best amenities right on the doorstep. The sales team are really excited to introduce the third phase of the development to the residents and local area."



## ESTATE MANAGEMENT UPDATE

### SECURITY

Following the security breach of bicycle thefts at Chobham Manor in September 2019, all the cycle store locks have been replaced and upgraded to increase security. Working in partnership with the local police, we were able to identify the culprits from CCTV resulting in three people being arrested and charged and some bikes were recovered and returned to their owners. We'd like to thank you for your continued support throughout this time.

### NEW TEAM MEMBERS

#### Team update...

**Natasha Pin**, Regional Manager,

**Sadia Akram**, Property Manager

**Arafat Hussain**, Graduate Property Manager

have joined the Chobham Manor Estate Management Team. Natasha, Sadia and Arafat bring an array of skills and drive to meet the expectations of our residents.

Contact the team at [chobhammanor1@lqgroup.org.uk](mailto:chobhammanor1@lqgroup.org.uk).

Visit the Estate Services page on [chobhamlife.co.uk](http://chobhamlife.co.uk) to learn more about the team and information on your individual block.



### PARCEL COLLECTION DATES

The parcel collection cut off date is reflected in the Christmas opening and closing hours listed opposite. Please ensure you consider the office opening/closing dates listed when using the parcel collection service.

#### Parcels can be collected from:

The Chobham Manor Estate Office,  
3 Peloton Avenue, E20 1HB,  
Monday to Friday between 9am - 5pm unless otherwise stated.  
Photo ID is required on collection.

Please note you may opt out of this service by request at the estate office.

Please contact L&Q on **0300 456 9998** during hours outside of the dates and times listed.

### ESTATE MANAGEMENT OFFICE CHRISTMAS OPENING HOURS:

Tuesday 24 December 2019 - 9am -12 noon

Wednesday 25 December 2019 - Closed

Thursday 26 December 2019 - Closed

Friday 27 December 2019 - 9am-5pm

Monday 30 December 2019 - 9am-5pm

Tuesday 31 December 2019 - 9am-3pm

Wednesday 1 January 2020 - Closed

Thursday 2 January 2020 - 9am-5pm

### FIRE SAFETY DURING CHRISTMAS

During the festive season we would like to remind all residents to be safe by following some simple guidelines:

- Try not to overload adapters with Christmas lights and decorations and make sure to double-check the safety of your Christmas lights.
- Where you have balconies, please make sure they are kept clean and clear including railings. All communal areas (if you live in part of a block/apartment) should also not be decorated.
- Please remember to switch off all electrical lights and appliances when heading to sleep or leaving your property.
- Keep live trees away from burning candles and from any heat sources within your home.

If you need any further advice please refer to London Fire Service website at [www.london-fire.gov.uk](http://www.london-fire.gov.uk).



**ACROSS THE PARK**



**IQL'S LIVING ROOM**

Next time you're having a wander around International Quarter London (IQL), check out IQL's Living Room. It's located just along from the pavilion, in the new public space outside 2 Redman Place.

IQL encourage people to work where they feel most inspired. And believe this extends beyond those who work in IQL buildings, to the wider Stratford community.

The Living Room is a multi-use, drop-in workspace. It's outdoors but sheltered to encourage people to sit and work, hold meetings, catch-up with colleagues or just get a change of scenery within the working day.

IQL are keen to encourage the general public to explore the Living Room's use as a space for creativity and inspiration, whether you're using it to host a group workshop or a live performance. The space seats 30 people and is equipped with power sockets, lighting and Wi-Fi so you can be just as connected as you would be indoors.

The space is designed for general use on a drop-in basis, but you can also book the space for specific group events. If you would like to do this, please contact the IQL Estates Manager, Charlotte on [charlotte.hutton@eu.jll.com](mailto:charlotte.hutton@eu.jll.com).

**FARMER'S MARKET**

Visit East London's midweek Farmer's Market. Open every Wednesday between 9am-4pm at The View Tube Olympic Park, E15 2PJ.

Relax and enjoy the community family atmosphere to a market mix of music, lovely garden space and a VT Café.

Stalls include Brambletye Fruit Farm and The Celtic Bakers.

**WINTER WALKS ON THE PARK**

Whether it's to work up an appetite or work off one too many roast potatoes, winter walks are a true tradition of the festive period. With an award-winning Park on your doorstep there's no better place to enjoy some fresh air and don't forget Queen Elizabeth Olympic Park is open 365 days of the year - perfect for a Christmas Day stroll! It's also been designed to be as accessible and inclusive as possible, with step-free access available throughout the Park, so the whole family can join in the fun.

**ANYTIME FITNESS SALE**

Anytime fitness is the #1 premium 24Hr gym in Stratford, offering unlimited free classes such as yoga, Pilates, Zumba, spin and more. With your membership you will also gain access to all Anytime fitness gyms across the globe. There's also a special offer - join this December and get the month for free\*.

Visit Anytime Fitness for a gym tour and for further information contact [stratfordeast@anytimefitness.co.uk](mailto:stratfordeast@anytimefitness.co.uk).

**OPENING OF THE WINTER TERRACE**

**THE STRATFORD**

'Tis the season for the launch of The Stratford Brasserie's Winter terrace. With an open fire pit, Christmas lights, giant snowflakes and abundant winter planting, the terrace has something for every occasion; Grab-n-Go coffee, weekend brunch, cosy cocktails and pizza straight from the pizza hut. Pizzetta and a beer for £5 or Champagne and pizzetta for £10, available 3pm - 6pm all week.

Visit **The Stratford under the terrace's Christmas canopy from the 30th November.**

**WE'RE JUST A CALL AWAY...**

**IF YOU EXPERIENCE ANY MAINTENANCE ISSUES WITH YOUR HOME:**

Private purchasers - Taylor Wimpey Customer Services  
T: 01277 236 888

L&Q tenants and leaseholders - L&Q Aftercare Team  
T: 0300 456 9996

**ESTATE AND BLOCK MANAGEMENT QUERIES:**

E: [ChobhamManor1@lqgroup.org.uk](mailto:ChobhamManor1@lqgroup.org.uk)  
W: [Chobhamlife.co.uk](http://Chobhamlife.co.uk)  
T: 0300 456 9998

**QUESTIONS ABOUT THE NEW HOMES OR CONSTRUCTION WORK:**

Marketing Suite T: 020 3435 9269  
Open daily, 10am - 5.30pm.

**COMMUNITY ENGAGEMENT ACTIVITIES OR INFORMATION:**

Sharan Ansong, Business Lead - Chobham Manor  
E: [SAnsong@lqgroup.org.uk](mailto:SAnsong@lqgroup.org.uk)  
T: 0300 456 9998

